

COMPLEMENTARY DEVICES

The technological lines for sorting waste can be equipped with complementary devices to make the waste processing simpler and more effective.

Waste Shredder

To reduce the volume of the residual waste before its further processing mostly double shaft shredders are used. The shredder is usually placed at the end of the reading conveyor where it processes the unsorted (residual) waste, which falls to a prepared container or on a conveyor, which carries it to further processing.



Carton Cutter

The device is designed for rough cutting of paper cartons, boxes and other large paper waste before its pressed or further processed. The outputs from the cutter are pieces allowing effective pressing of carton.

Piercer

The device is designed for pricking PET bottles and other plastics barrels. Using the piercer will ensure that air flows away from bottles before they are pressed, which makes the whole process more effective. The device can be installed independently or it can be incorporated into the technology before a press hopper.



Magnetic Metals Separator

Magnetic metals separator can be used to separate metal parts from the sorted waste. The type and kind of separator is chosen according to the amount of metal parts in the waste. There can be installed either a permanent magnet where the staff must take away the metal parts manually or an overbelt magnet, where the metal parts are carried from the traffic way automatically.

Pressed Bales Separator

The device was designed to grind the pressed bales to individual parts with subsequent transportation on the connected technology where the waste is further processed.



WASTE SORTING PLANTS

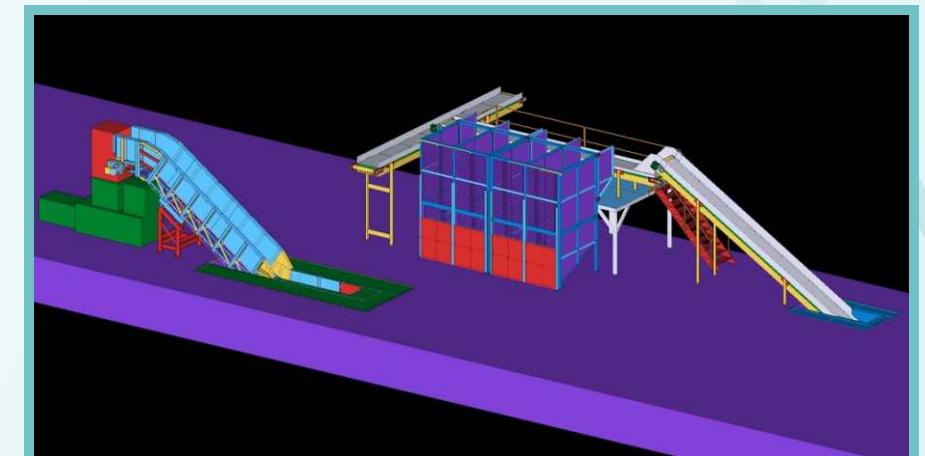
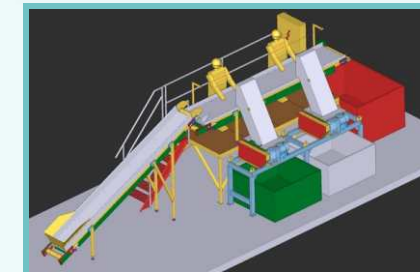
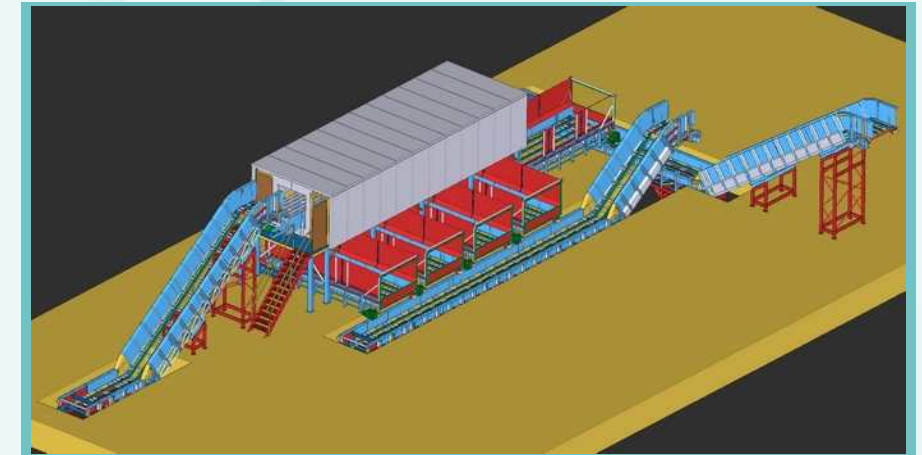
Technology for final-sorting of the separated communal waste

Separated communal waste has to be sorted before it is processed. The sorting is either according to a category (newspaper, magazine paper, tetra pack paper...) or it is the sorting of one kind of waste according to a color (e.g. PET, glass) or also according to the kind of waste (paper, plastics, carton, glass...).

For this case there are waste sorting plants, which are systems of conveyers, containers for the separated waste and pressing devices for volume reduction of the sorted waste for its transport and further processing.

The whole technology can be completed with other devices as e.g. a shredder, a carton cutter, a PET bottles piercer, a magnetic metals separator, a pressed bales separator and others.

The company ODES s.r.o. supplies the complete lines for waste sorting from a project and technology preparation, through manufacturing of the whole technology up to assembly and setting the line into operation. The overall guarantee and after-guarantee service is a matter of fact.



WASTE SORTING PLANTS

LARGE SORTING PLANTS

In the sorting plants of this kind it is possible to process big amount of waste. The waste is shoved onto sunk conveyers which carry the waste either to a sorting "reading" conveyor or directly to a chamber of a high density horizontal press.



The main body of the technology is a sorting room, through which so called "reading" conveyor goes. On this conveyor staff of eight or more people sorts the waste, which they fill through chutes to containers placed under the sorting room. The containers can be also alternatively supplied with movable bottoms for its independent discharge.



The separated waste is then transported by a system of chain conveyers with rubber belt to a chamber of the high density horizontal press, which component part is an automatic binding system for fixing the pressed bales. These are then stored by the staff on determined place before their further processing.



SMALL SORTING PLANTS



The simple sorting line has input conveyor, which transports the waste to the "reading" conveyor, where staff of three to six people sorts it and puts it to the containers, which lead directly to pressing chambers of a baler with mobile pressing head. The unsorted (residual) waste falls at the end of the "reading" conveyor to the prepared container above which there can be alternatively placed a shredder, which reduces volume of the waste for its better transport and storing.



MINI SORTING PLANTS



This type of a sorting plant is designed for plants with small amount of waste. The technology of sorting is similar to the small sorting plants only with the difference that the chutes by the "reading" conveyor fill movable boxes or containers, which are by a dumper emptied to a hopper of a two-chambers baler. The hopper is constructed to enable to fill both press chambers in turns from one dumping place.

